



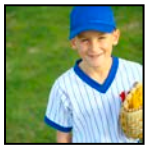
# VENTURA COUNTY SPECIAL EDUCATION LOCAL PLAN AREA (SELPA)

*Área del Plan Local de Educación Especial del Condado de Ventura (SELPA)*

**COMMUNITY ADVISORY COMMITTEE**

*Comité Consejero Para La Comunidad*

# *Community Resource Directory*



**Directorio de Recursos  
para La Comunidad**



**2012**



**PROGRAMS AND SERVICES FOR FAMILIES OF STUDENTS  
ENROLLED IN SPECIAL EDUCATION**

*Programas y Servicios Para Familias de  
Estudiantes Matriculados en Educación Especial*

Ventura County SELPA, 5100 Adolfo Road, Camarillo, CA 93012  
(805) 437-1560, Fax: (805) 437-1599, [www.venturacountyselpa.com](http://www.venturacountyselpa.com)

# TABLE OF CONTENTS

## (CONTENIDOS)

Page/ (Página)

INTRODUCTION ( <i>INTRODUCCIÓN</i> ).....	1
<b>I. <u>LOCAL RESOURCES</u> (<i>RECURSOS LOCALES</i>).....</b>	<b>2</b>
• Disability Specific ( <i>Incapacidad Específica</i> ) .....	3
• Emotional/Behavioral ( <i>Emocional/Comportamiento</i> ) .....	4
• Health/Medical ( <i>Salud/Médico</i> ) .....	6
• Legal/Advocacy ( <i>Legal/Abogacía</i> ).....	7
• Recreation/Leisure ( <i>Recreación/Tiempo Libre</i> ).....	8
• Assistive Technology Centers .....	11
( <i>Centros de Acceso Tecnológico</i> )	
• Referral ( <i>Referencia</i> ) .....	12
• Residential Care ( <i>Cuidado Residencial</i> ).....	14
• Support & Self-Help Groups ( <i>Grupos de Apoyo y Ayuda Propia</i> ) .....	14
• Therapy ( <i>Terapia</i> ) .....	16
• Transportation ( <i>Transportación</i> ).....	17
<b>II. <u>STATE RESOURCES</u> (<i>RECURSOS ESTATALES</i>).....</b>	<b>18</b>
<b>III. <u>NATIONAL RESOURCES</u> (<i>RECURSOS NACIONALES</i>) .....</b>	<b>10</b>
<b>IV. <u>OTHER RECOMMENDED RESOURCES</u> (<i>OTROS RECURSOS</i>) .....</b>	<b>24</b>
<b>V. <u>ACKNOWLEDGEMENTS</u> (<i>RECONOCIMIENTOS</i>).....</b>	<b>27</b>
<b>VI. <u>STILL CAN'T FIND IT?</u> (<i>¿NO LO ENCUENTRA?</i>).....</b>	<b>27</b>



## INTRODUCTION

*This directory has been developed by a group of parents and professionals to answer a need for a directory of resources addressing the needs of a family with a child with special needs. This directory is not all-inclusive and the agencies or services listed are not necessarily endorsed by Ventura County SELPA.*

*This directory is available to families and to professionals because we know that families often turn to the professionals working with their children for guidance in finding the resources that they need. We feel very strongly that our children with special needs are a part of our community and that families want to know what resources are available to them in their community.*

*Pages 4 through 14 list some local resources including Ventura County and North Los Angeles County. However, sometimes the information that we are looking for isn't available locally and finding a state or national resource can be overwhelming. For help in getting started, try pages 14 through 19.*

*The individuals who gathered this information wish you and yours the best of luck in finding and accessing the services and supports you are looking for.*

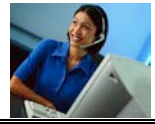
## INTRODUCCIÓN

*Este directorio ha sido formado por un grupo de padres y profesionales para corresponder la necesidad de un directorio de recursos consignados a las necesidades de familias con un niño/a con necesidades especiales. Este directorio no es todo incluido y las agencias o servicios anotados no son necesariamente endosados por SELPA del Condado de Ventura.*

*Este directorio está disponible a familias y profesionales porque sabemos que la mayoría de las veces estas se dirigen a los profesionales que trabajan con sus niños para guiarlos a encontrar los recursos que ellos necesitan. Nos sentimos muy convencidos que nuestros hijos con necesidades especiales son parte de nuestra comunidad y que las familias quieran saber cuales servicios tenemos disponibles en su área.*

*Enlistamos desde la página 4 hasta la página 14 algunos recursos locales incluyendo el Condado de Ventura y el Condado Norte de Los Angeles. Sin embargo, hay veces que la información que estamos buscando no esta disponible localmente y encontrando el recurso estatal o nacional puede ser abrumador. Para ayudarlos a comenzar, empiecen en la página 14 hasta la página 19.*

*Las personas que obtuvieron esta información desean que usted y todos los suyos puedan encontrar y tener acceso a los servicios que están buscando.*



## **I. LOCAL RESOURCES (RECURSOS LOCALES)**

### **Disability Specific (Incapacidad Específica)**

Groups formed for support, research and/or information regarding a specific disability.  
(Grupos formados para ofrecer apoyo, investigación y/o información tocante a la incapacidad específica.)

(Additional support and self-help groups found on page 11.)  
(Apoyo adicional y grupos de ayuda propia pueden encontrarse en la página 11.)

#### **Braille Institute of America**

2031 De la Vina, Santa Barbara, CA 93105  
(805) 682-6222 Fax: (805) 687-6141  
[www.brailleinstitute.org](http://www.brailleinstitute.org)

741 N. Vermont Ave, Los Angeles, CA 90029  
(323) 663-1111 Fax: (323) 663-0867

**California Relay Services**  
(for deaf/hard of hearing)  
Dail 711

**C.H.A.D.D., (Attention Deficit Disorders)**  
Santa Barbara, (805) 696-9449  
Sherman Oaks, (818) 773-4068  
[www.chadd.org](http://www.chadd.org)

**Charcot-Marie-Tooth Disease**  
3421 Pier Walk, Oxnard, CA 93035  
(805) 985-7332

Santa Barbara  
(805) 693-9511  
[Cmtasg\\_santabarbara@chercot-marie-tooth.org](mailto:Cmtasg_santabarbara@chercot-marie-tooth.org)  
[www.charcot-Marie-tooth.org](http://www.charcot-Marie-tooth.org)

**Children's Hospital Los Angeles University  
Affiliated Training Program (Autism)**  
450 Sunset Blvd, Los Angeles, CA 90027  
(323) 660-2450 Fax: (323) 953-0439

**Dyslexia Awareness and Resource Center**  
928 Carpinteria Street, Suite 147  
Santa Barbara, CA 93103  
(805) 963-7339  
<http://dyslexia-center.com>  
(Also have information on Attention Deficit Disorder).

**Family Focus Resource & Empowerment Center**  
18111 Nordhoff Street, Northridge, CA 91330  
(818) 677-6854  
[www.csun.edu/deafproject](http://www.csun.edu/deafproject)

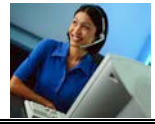
**House Ear Institute (Hearing Impairments)**  
2100 W Third Street, Los Angeles, CA 90057  
(213) 483-9930 (213) 484-2642-TDD  
Fax (213) 483-8789  
[www.HEI.org](http://www.HEI.org)

**Learning Disabilities Association (LDA) CA-Los Angeles Chapter**  
37 N. Auburn Ave., Suite 3  
P.O. Box 1067, Sierra Madre, CA 91024  
(626) 355-0240 Fax: (626) 355-0109  
Email: [lalda@org](mailto:lalda@org)

**Multiple Sclerosis Society-Channel Islands Chapter**  
2440 S. Sepulveda Blvd. Suite 115  
Los Angeles, CA 90064  
(310) 479-4456 Fax (310) 479-4436  
[www.nationalmssociety.org/cal](http://www.nationalmssociety.org/cal)

**Muscular Dystrophy Association**  
402 E. Carillo, Suite C  
Santa Barbara, CA 93101  
(805) 560-7651 Fax (805) 966-6192  
[www.mda.org](http://www.mda.org)

**National Alliance for the Mentally III (AMI)-  
Ventura County**  
1339 Del Norte Rd, Camarillo, CA 93011  
(805) 732-9667  
Santa Barbara: (805) 884-8440 x105  
Westside - Los Angeles: (310) 820-4626  
[www.namiventura.org](http://www.namiventura.org)



**Obsessive Compulsive Spectrum Disorders Association**  
18653 Ventura Blvd. #414, Tarzana, CA 91356  
(818) 990-4830  
[www.brainphysics.com](http://www.brainphysics.com)

**Prader-Willi CA Foundation/Tri-County Area**  
(805) 461-0191

**Prader-Willi California Foundation Office**  
514 N. Prospect Ave., Suite 110, Lower Level  
Redondo Beach, CA 90277  
(310) 372-5053 (800) 400-9994 (within CA)  
[www.PWCF.org](http://www.PWCF.org)

**The MAGIC Foundation**  
6645 W. North Avenue, Oak Park, IL 60302  
1-800-362-4423 / (1-800-3-MAGIC-3) / 708-383-0808  
<http://www.magicfoundation.org/www>

**Tracy, John (John Tracy Clinic),  
(Hearing Impairments)**  
806 West Adams Boulevard  
Los Angeles, CA 90007  
(213) 748-5481  
740 E. Wardlow Rd.  
Long Beach, CA 90807  
(562) 426-2257  
[www.johntracyclinic.org](http://www.johntracyclinic.org)

**Tri-County GLAD (The Greater Los Angeles Council  
on Deafness, Inc.)**  
702 County Square Dr., Suite 101  
Ventura, CA 93003  
(805) 644-6322, (805) 644-6323 - TTY  
[www.tcglad.org](http://www.tcglad.org)

**United Cerebral Palsy of Los Angeles, Ventura  
& Santa Barbara**  
6430 Independence Ave., Woodland Hills, CA  
91367  
(818) 782-2211

[www.ucpla.org](http://www.ucpla.org)  
**United Parents for Families in Crisis**  
391 So. Dawson, Suite 1A, Camarillo, CA 93012  
(805) 384-1555 (office) 24/7: (805) 551-0472  
[www.unitedparents.org](http://www.unitedparents.org)  
**University of California at Los Angeles**  
300 UCLA Medical Plaza, Suite 3302  
Los Angeles, CA 90095-6967  
[www.uclahealth.org](http://www.uclahealth.org)

*ABC Child Partial Hospitalization Program  
Division/Adolescent Psych*  
(310) 825-0415

*Early Childhood Partial Hospitalization Program  
Division Child/Adolescent Psych*  
(310) 206-2695  
[www.hpi.ucla.edu/ecphp](http://www.hpi.ucla.edu/ecphp)

*Autism Evaluation Clinic*  
(310) 794-4008  
[www.autism.ucla.edu/aec](http://www.autism.ucla.edu/aec) (search  
"developmental disabilities")

**Ventura County Autism Society**  
900 Calle Plano, Suite K, Camarillo, CA 93012  
(805) 496-1632  
[www.vcas.info](http://www.vcas.info)



## Emotional/Behavioral (*Emocional/Comportamiento*)

Programs offering counseling, treatment or inpatient care for behavioral or emotional concerns.  
(Programas ofreciendo consejos, tratamiento o cuidado al paciente interno  
relacionado a preocupaciones emocionales o de comportamiento.)

**Center for Attention Disorders** (counseling, social skills groups, parenting issues)  
509 Marin St., Suite 124 B, C, D  
Thousand Oaks, CA 91360  
(805) 373-8365

**Holdsambeck & Associates, Inc.**  
126 South H St., Lompoc, CA 93436  
(805) 979-9941  
[office@Holdsambeck.com](mailto:office@Holdsambeck.com)

**Interface - Children's Family Services of Ventura County**, (Crisis Services and Genesis Home-Based Therapy Program)  
1305 Del Norte Road, Suite 130,  
Camarillo, CA 93010-8366  
2-1-1 (emergencies)  
(800) 636-6738 (non emergency)  
[www.icfs.org](http://www.icfs.org)

**Institute of Applied Behavior Analysis (IABA)**  
333 N. Lantana St., Camarillo, CA 93010-9009  
(805) 987-5886  
[www.iaba.com](http://www.iaba.com)

**Jewish Family Services**  
857 E. Main St., Ventura, CA 93001  
(805) 641-6565  
[www.jfsvc.org](http://www.jfsvc.org)

**Los Angeles County Mental Health Services**  
529 S. Maple Ave., Los Angeles, CA 90013  
(213) 251-6801  
Helpline 24/7 (800) 854-7771  
[www.dmh.lacounty.gov](http://www.dmh.lacounty.gov)

**Morbrook Institute** (affordable education & counseling)  
155 Granada St., Suite A, Camarillo, CA 93010  
(805) 484-7868  
[www.morbrook.org](http://www.morbrook.org)

**Services United** (Counseling Center)  
951 E. Main St., Santa Paula, CA 93060  
(805) 525-9392

**Star Inc.**  
685 E. Cochran St., Ste 200, Simi Valley, CA 93065  
(805) 583-8060  
[www.starautism.com](http://www.starautism.com)

**United Advocates for Children of California (UACC)**  
250 Heath St., Santa Cruz, CA 95060  
(831) 426-2897

### Ventura County Behavioral Health Clinics - Children

- 1) 5740 Ralston St., Suite 100, Ventura  
(805) 289-3100
- 2) 1227 E. Los Angeles Ave., Simi Valley  
(805) 582-4080
- 3) 72 Moody Court, Thousand Oaks  
(805) 777-3505
- 4) 1911 Williams Dr., Oxnard, 93036  
(805) 981-8460
- 5) 333 W. Harvard, Santa Paula, 93060  
(805) 525-1618
- 6) 828 Ventura St., Suite 240, Fillmore, 93015  
(805) 524-8660

**Ventura County Behavioral Health Alcohol & Drug**  
3291 Loma Vista Rd., Ventura, CA 93003  
(805) 652-6235

**Ventura County Emergency Team (Mental Health)**  
200 North Hillmont Avenue, Ventura, CA 93003  
(805) 652-6727

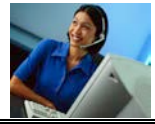
**Children's Intensive Response Team**  
(Children's Emergencies) Response 24/7  
1-888-431-2478 (CIRT)



**Ventura County Mental Health Services**  
300 Hillmont Avenue, Ventura, CA 93003  
(805) 981-6830

**Vista del Mar Hospital**  
801 Seneca St., Ventura CA 93001  
(805) 653-6434 (800) 207-9694  
[www.bhcvistadelmar.com](http://www.bhcvistadelmar.com)

**Yellen & Associates**  
11260 Wilbur Ave., Suite 303,  
Northridge, CA 91326  
(818) 360-3078  
[www.yellenandassociates.com](http://www.yellenandassociates.com)



## Health/Medical (*Salud/Médico*)

Services that assist people in achieving and maintaining physical well-being as well as preventing and treating acute/chronic disease, illness and injury.  
(*Servicios que ayudan a las personas a lograr y mantener su bienestar físico al mismo tiempo impidiendo y tratando una enfermedad crónica/grave, heridas y otras enfermedades.*)

**Child Health & Disability Prevention (CHDP) of Ventura County**  
Health Care Agency, Ventura County  
2240 E. Gonzales Rd., Suite 270, Oxnard 93036  
(805) 981-9291

**California Children Services (CCS)  
Children With Special Needs**  
2240 E. Gonzales, Suite 260, Oxnard, CA 93036  
(805) 981-5281 Fax: 981-5280

**Children's Resource Program - Interface Children,  
Family Services**  
1305 Del Norte Road, Suite 130  
Camarillo, CA 93010  
(805) 485-6114 (800) 636-6738  
[www.icfs.org](http://www.icfs.org)

**Conejo Free Clinic (Medical & Legal)**  
80 E. Hillcrest, Suite 102  
Thousand Oaks, CA  
(805) 497-3575

**Intensive Care Nursery (I.C.N.) Follow-up Program**  
County of Ventura  
3212 Loma Vista Road, Suite 260  
Ventura, CA 93003  
(805) 648-9983

**Loma Linda University Children's Hospital**  
11234 Anderson St., Loma Linda, CA 92354  
(909) 558-8000  
[www.lomalindahealth.org/childrens-hospital](http://www.lomalindahealth.org/childrens-hospital)

**Mattel Children's Hospital at UCLA**  
Los Angeles, CA  
(310) 825-9867  
[www.uclahealth.org](http://www.uclahealth.org)

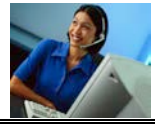
**The Free Clinic of Simi Valley (Medical,  
Counseling)**  
2060 Tapo St., Simi Valley, CA 93063  
(805) 522-3733 [www.freeclinicsv.com](http://www.freeclinicsv.com)

**(The) Rehabilitation Institute of Santa Barbara**  
427 Camino del Remedio  
Santa Barbara, CA 93110  
(805) 967-5938

**Ventura County Department of Public Health**  
2240 E. Gonzales Rd., Suite 210, Oxnard, CA  
93036  
(805) 981-5101

**Ventura County Early Start, (0-3 years)**  
2220 E. Gonzales Rd., Suite 210  
Oxnard, CA 93036  
(805) 485-3177 (800) 664-3177

**Ventura County Office of Education  
Hearing Conservation Department**  
5100 Adolpho Dr., Camarillo, CA 93012  
(805) 437-1380 Fax: 389-4297



## Legal/Advocacy (*Legal/Abogacía*)

Groups which advocate for disabled rights and low-cost legal services.  
(*Grupos defensores de los derechos de incapacidad y servicios legales a un costo bajo.*)

**Area IX Board for Developmental Disabilities**  
200 East Santa Clara St., Suite 210, Ventura, CA  
Anastasia Bacigalupo, Executive Director  
(805) 648-0220

**Area Board 10 for Developmental Disabilities**  
411 N. Central Ave, Suite 620  
Glendale, CA 91203  
(818) 543-4631  
[www.areaboard10.org](http://www.areaboard10.org)

**Channel Counties Legal Services Association**  
250 Citrus Grove Lane, Suite 210  
Oxnard, CA 93032  
(805) 487-6531  
[www.usattorneylegalservices.com/free-legal-aid-california.html](http://www.usattorneylegalservices.com/free-legal-aid-california.html)

**Conejo Free Clinic (Legal & Medical)**  
80 E. Hillcrest, Suite 102, Thousand Oaks, CA  
(805) 497-3575  
[www.conejofreeclinic.org](http://www.conejofreeclinic.org)

**Disability Rights California**  
**California's Protection & Advocacy System**  
3580 Wilshire Blvd., Suite 902  
Los Angeles, CA 90010-2512  
(213) 427-8747 (800) 776-5746  
(800) 719-5798 TTY  
[www.disabilityrightsca.org](http://www.disabilityrightsca.org)

**Social Security Administration (SSA and SSI)**  
3585 Maple St. #101, Ventura; (805) 642-7583  
327 North 5th Street, Oxnard; (805) 486-9269  
80 East Hillcrest Drive Ste 200, Thousand Oaks,  
(800) 772-1213 (800) 325-0778 TTY  
[www.socialsecurity.gov](http://www.socialsecurity.gov)

**Team of Advocates for Special Kids (TASK)**  
100 W. Cerritos Ave., Anaheim, CA 92805  
(714) 533-8275 or Fax: 533-2533  
[taskca@aol.com](mailto:taskca@aol.com)

**The Free Clinic of Simi Valley (Legal, Medical and Counseling)**  
2060 Tapo Street, Simi Valley, CA 93065  
(805) 522-3733  
[www.freeclinicsv.com](http://www.freeclinicsv.com)

**Tri-County GLAD (The Greater Los Angeles Council on Deafness, Inc.)**  
702 County Square Dr., Suite 101  
Ventura, CA 93003  
(805)644-6322 (805) 644-6323 TTY  
[www.tcglad.org](http://www.tcglad.org)

**United Parents for Families in Crisis**  
391 So. Dawson, Suite 1A, Camarillo, CA 93012  
(805) 384-1555 (office) (805) 551-0472 (24/7)  
[www.unitedparents.org](http://www.unitedparents.org)

**Ventura County Bar Association**  
4475 Market Street, #B, Ventura, CA 93003  
(referral fee \$35.00)  
(805) 650-7599  
[www.vcba.org](http://www.vcba.org)



## Recreation/Leisure (*Recreación/Tiempo Libre*)

Services include camps, recreational, sports and leisure activities for youth and adults which enhance physical and emotional well-being.

*(Los servicios incluyen campamentos, recreación, deportes y actividades de tiempo libre para los jóvenes y adultos los cuales refuerzan el bienestar emocional y la condición física.)*

### Above and "Beyond" Ordinary People

Equine Therapy serving Ojai, Oak View, Ventura and Oxnard Areas  
(805) 217-2776

<http://abopeople.org/aboutus.html>

### Arts: National Arts and Disability Center

Tarjan Center - UCLA  
300 UCLA Medical Plaza, Suite 3330  
Los Angeles, CA 90095-6967  
(310) 794-1141 Fax: (310) 794-1143

[www.nadc.ucla.edu](http://www.nadc.ucla.edu)

### Boys & Girls Club of Camarillo

1500 Temple Ave, Camarillo, CA 93010  
(805) 482-8113

### Boys & Girls Club of Conejo & Las Virgenes

Administration  
5137 Clareton Drive #210  
Agoura Hills, CA 91301  
(818) 706-0905

- Chaparral  
22601 Liberty Bell Rd., Calabasas, CA 91302  
(818) 224-3097  
Director: Anne Lee
- Colina  
1450 E. Hillcrest, Thousand Oaks, CA 91362  
(805) 449-1309  
Director: Jennifer Wissusik
- Los Cerritos  
1980 E. Avenida de los Flores  
Thousand Oaks, CA 91362  
(805) 493-2917  
Director: Georgi Harden
- Redwood  
233 W. Gainsborough Rd  
Thousand Oaks, CA 91362  
(805) 371-4045  
Director: Dave DeMaio

- Sequoia  
2855 Borchard Rd, Newbury Park, CA 91320  
(805) 375-5635  
Director: Lisa Barron

### Boys & Girls Club of Greater Oxnard & Port Hueneme ([www.positiveplace4kids.org](http://www.positiveplace4kids.org)):

Martin V. Smith Branch  
1900 W. Fifth Street, Oxnard, CA 93035  
(805) 815-4959

Port Hueneme Branch  
590 E. Pleasant Valley, Port Hueneme, CA 93041  
(805) 271-9773 Fax: (805) 271-0443

Rio Rosales Branch  
2001 Jacinto Drive 93030, Oxnard, CA  
(805) 983-4021

Squires Housing Unit  
5123 Squires Drive, Oxnard, CA  
(805) 385-7985

**Boys & Girls Club Santa Clara Valley**  
806 Railroad Ave., Santa Paula, CA 93060  
(805) 525-7910

**Boys & Girls Club Ventura**  
6059 King Dr., Ste A, Ventura, CA 93003  
(805) 641-5585

**Camarillo Family YMCA**  
(805) 484-0423

**Camp Fire USA**  
1267 W. Gonzales Rd., Oxnard, CA 93031  
(805) 485-3417

**City of Oxnard Recreation Youth Development Center**  
545 S. 9<sup>th</sup> St. or 555 S. 8<sup>th</sup> St., Suite 25  
Oxnard, CA 93030  
(805) 385-7995



### Creating Inclusive Opportunities

1673 Donlon St. Ste 203, Ventura, CA 93003  
(805) 339-0210  
[www.creatinginclusiveopportunities.com](http://www.creatinginclusiveopportunities.com)

Easter Seals Tri-Counties (therapeutic pool)  
10730 Henderson Road, Ventura, CA 93004  
(805) 647-1141

### Epilepsy Teen Retreat

Epilepsy Foundation of Los Angeles, Orange,  
San Bernadino & Ventura Counties  
5777 W. Century Blvd., Suite 820  
Los Angeles, CA 90045  
(310) 670-2870 or (800) 564-0445  
[SOS@epilepsy-socalif.org](mailto:SOS@epilepsy-socalif.org)

### Handicapables

Jackie Cammerer (805) 527-7806

### Hearts and Horses

Agoura Hills, CA 91376  
(818) 889-8605

### Institute of Equestrian Therapy

2791 Dalenhurst Place, Simi Valley, CA 93065  
Jacques Fouchaux, (805) 522-6714

### New Directions, Inc.

5276 Hollister Ave., Suite 207  
Santa Barbara, CA 93111  
(805) 967-2841 (888) 967-2841 Fax: 964-7344  
[newdirec@silcom.com](mailto:newdirec@silcom.com)

### PARKS and RECREATION DISTRICTS:

Services vary. Many offer "adaptive" or "therapeutic" programs for people with special needs. For more specific information see our supplemental informational booklet "Community Parks and Recreation Programs" on our website at <http://www.venturacountyselpa.com/cac/id7.htm> or call (805) 437-1560 for a free copy. (*Servicios variados. Muchos ofrecen "adaptación" o programas "terapéuticos" para personas con necesidades especiales. Para mas información específica vea el folleto informativo adicional "Programas Comunitarios de Parques y Recreo" visite nuestro sito de internet <http://www.venturacountyselpa.com/cac/id7.htm>. o llame al (805) 437-1560 para pedir su copia gratuita.*)

- City of Agoura Hills, (818) 597-7361
- City of Calabasas, (818) 880-6461
- City of Fillmore, (805) 524-3701

- City of Moorpark, (805) 517-6300
- City of Ojai, (805) 646-1872
- City of Oxnard, (805) 385-8019
- City of Port Hueneme, (805) 986-6542
- City of Santa Paula, (805) 933-4226
- City of Ventura, (805) 658-4726
- Pleasant Valley Recreation and Park District, Camarillo, (805) 482-1996
- Rancho Simi Recreation District, (805) 584-4400  
Alternative Recreation, (805) 584- 4456
- Thousand Oaks/Conejo Recreation and Park District, (805) 381-2739
- Ventura County Parks and Recreation, (805) 654-3951
- Woodland Hills Parks and Recreation Department, (818) 883-9370

### Recreation Youth Development Center

555 South "A" St., Suite 265, Oxnard, CA 93030  
(805) 385-7995

### Ride On

Therapeutic Riding Program  
401 Ronel Ct., Newbury Park, CA 91320  
(805) 375-9078

### Ride on

21126 Chatsworth St., Chatsworth, CA 91311  
[www.rideon.org](http://www.rideon.org)

### Special Equestrian Riding Therapy (S.E.R.T.), Saddle Rock Ranch

9633 Baden Ave., Chatsworth, CA  
(818) 776-6476  
[www.sert.org](http://www.sert.org)

### The Conejo Valley Friendship Circle

30345 Canwood St., Agoura, CA 91301  
(818) 865-2233  
[www.friendshipcircleca.org](http://www.friendshipcircleca.org)

### Ventura County Special Olympics

1559 Spinnaker Dr., #206, Ventura, CA 93001  
(805) 650-7717

### Ventura Family YMCA

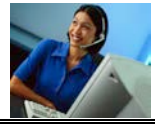
(805) 642-2131



**West Valley Jewish Community Center**  
22622 Vanowen St., West Hills, CA 91307  
(818) 464-3300 Fax (818) 474-3390

**Western Association of Independent Camps**  
(General Regional Camp Information)  
[www.waic.org](http://www.waic.org)

**Winners on Wheels (WOW)**  
2842 Business Park Ave., Fresno, CA  
(559) 291-3386



## **Assistive Technology Centers/ (Centros De Acceso Tecnológico)**

Agencies that support access to school, recreational and  
community opportunities thru assistive technology.

*(Agencias que apoyan oportunidades a través de acceso tecnológico en la escuela, recreación y comunidad.)*

**Alliance for Technology Access**  
1304 Southpoint Blvd., Suite 240  
Petaluma, CA 94954  
(707) 778.3011 Fax (707) 765.2080  
TTY 707.778.3015  
[www.ataccess.org](http://www.ataccess.org)

**Assistive Technology Center**  
5551 Standish Rd., Sacramento, CA 95820  
Toll Free Phone or Fax: 888-723-5011  
Phone: 916-381-5011 Fax: 916-914-2429  
[www.atechcenter.net](http://www.atechcenter.net)

**Assistive Technology State Office**  
2547 8<sup>th</sup> St., #12-A, Berkley, CA 94710-2572  
(510) 841-3224 Fax: (510) 841-7956  
[cforat@aol.com](mailto:cforat@aol.com)

**ATAC - Adaptive Technology Assessment Center,  
Ventura County SELPA**  
5100 Adolfo Rd. Camarillo, CA 93012  
(805) 437-1575 Fax: (805) 437-1599

**Parent Helping Parents**  
[www.php.com/specialed](http://www.php.com/specialed)

**SACC - Assistive Technology Center**  
Simi Valley Hospital Rehab, Unit North  
P.O. Box 1325, Simi Valley, CA 93062  
[dssacca@aol.com](mailto:dssacca@aol.com)

**Sacramento Center for Assistive Technology**  
701 Howe Ave. Ste, E-5, Sacramento, CA 95825  
(916) 927-7228  
[scatca@quicknet.com](mailto:scatca@quicknet.com)

**San Diego Assistive Technology Center**  
8525 Gibbs Dr., #100, San Diego, CA 92123  
(858) 571-7803  
[ucp@ucpsd.org](mailto:ucp@ucpsd.org)

**Team of Advocates for Special Kids (Assistive  
Technology Assessment Program)**  
100 W. Cerritos Ave., Anaheim, CA 92805  
(714) 533-8275 or 533-2533 Fax: (714) 533-2533  
[www.taskca.org](http://www.taskca.org)



## Referral (*Referencia*)

Services that provide linkage and information about resources.  
(*Servicios que proveen conexión e información sobre recursos.*)

**Area IX Board for Developmental Disabilities**  
200 East Santa Clara St., Ste 210, Ventura, CA  
Anastasia Bacigalupo, Executive Director  
(805) 648-0220 Fax: (805) 648-0226

**Area X Board for Developmental Disabilities**  
411 N. Central Ave., Suite 620, Glendale CA 91203  
(818) 543-4631

**Channel Islands Social Services**  
900 Calle Plano, Ste K, Camarillo, CA 93012  
(805) 384-0983  
[www.IslandSocialServices.org](http://www.IslandSocialServices.org)

**Child Development Resources of Ventura County**  
(Child care referrals)  
221 Ventura Boulevard, Oxnard, CA 93030  
(805) 485-7878  
[www.cdofvtaco.org](http://www.cdofvtaco.org)

**Commission on Human Concerns**  
621 Richmond Ave., Oxnard, CA 93015  
(805) 436-4000 [www.vcchc.org](http://www.vcchc.org)

**Interface - Children's Family Services of Ventura County**, (Help-line - Information and Referral Services)  
1305 Del Norte Road, Suite 130, Camarillo, CA 93010  
211 or (800) 339-9597

**Los Angeles County Mental Health Services**  
24/7 Helpline (800) 854-7771  
[dmh.lacounty.gov](http://dmh.lacounty.gov)

**Mental Health Access Line (Medi-Cal)**  
Ventura County, (800) 671-0887

**North Los Angeles County Regional Center**  
(for people with developmental disabilities)  
15400 Sherman Way, Suite 170, Van Nuys, CA 91406  
(818) 778-1900  
[www.nlacrc.org](http://www.nlacrc.org)

**Rainbow Connection Family Resource Center**,  
c/o Tri-Counties Regional Center  
2401 E. Gonzales Rd., Suite 100, Oxnard, CA  
93030

Laurie Jordan, Coordinator  
(805) 485-9643 (800) 332-3679  
(805) 485-9892 Spanish  
[www.tri-counties.org](http://www.tri-counties.org)

**Tri-Counties Regional Center**  
(for people with developmental disabilities)  
2401 E. Gonzales Rd., Suite 100  
Oxnard, CA 93030  
(805) 485-3177 (800) 664-3171  
Fax: (805) 988-7157  
[www.tri-counties.org](http://www.tri-counties.org)

1900 Los Angeles Ave., Suite 200  
Simi Valley, CA 93065  
(805) 522-8030 (800) 517-2524  
Fax: (805) 522-8142  
[www.tri-counties.org](http://www.tri-counties.org)

**United Way of Ventura County**  
1317 Del Norte Rd., Ste 100  
Camarillo, CA 93010  
(805) 485-6288  
[www.vcunitedway.org](http://www.vcunitedway.org)

**Ventura County Behavioral Health Clinics - Youth and Family Services**  
[www.vchca.org/dos/Program.asp?ProgID=265](http://www.vchca.org/dos/Program.asp?ProgID=265)

72 Moody Court, Ste 201, Thousand Oaks  
(805) 777-3505

333 W. Harvard, Santa Paula (805) 933-8489



---

**Ventura County Behavioral Health Services-  
Program Administration**

1911 Williams Dr., Ste 200,  
Oxnard, CA 93036  
(805) 981-2240

5740 Ralston St., Ste 100, Ventura, CA  
(805) 289-3100

1227 E. Los Angeles Ave., Simi Valley, CA (805)  
582-4080

1911 Williams Dr., Ste 150, Oxnard, CA  
(805) 981-8460

828 Ventura St., Ste 240, Fillmore, CA  
(805) 524-8660



## Residential Care (*Cuidado Residencial*)

IF YOU ARE INTERESTED IN INFORMATION REGARDING OUT OF HOME RESIDENTIAL PLACEMENT FOR YOUR CHILD CONTACT:

*Si esta interesado en información referente a vivienda residencial fuera de su hogar para su hijo/hija llame a:*

VENTURA COUNTY BEHAVIORAL HEALTH (*Salubridad de Comportamiento del Condado de Ventura*)

TRI-COUNTIES REGIONAL CENTER (*Centro Regional de los Tres Condados*)

NORTH LOS ANGELES COUNTY REGIONAL CENTER (*Centro Regional del Norte de Los Angeles*)

LOS ANGELES COUNTY MENTAL HEALTH SERVICES (*Servicios de Salud Mental del Condado de Los Angeles*)

## Support & Self-Help Groups (*Grupos De Apoyo Y Ayuda Propia*)

Services for special focus groups of people  
joining together for mutual support and/or assistance.

*(Servicios para grupos de personas de enfoque especial uniéndose para darse apoyo mutuo y/o asistencia.)*

**(Additional disability specific support and self-help groups found on page one)**

*(Grupos de apoyo de incapacidad específica y de ayuda propia se encuentran en la primera página.)*

### "Because I Love You", The Parent Support Group

Post Office Box 2062  
Winnetka, CA 91396-2062  
(818) 884-8242

### Big Brothers/Big Sisters of Ventura County

445 Rosewood, Ste Q  
Camarillo, CA 93010  
(805) 484-2282  
[www.bbbs.org](http://www.bbbs.org)

### Brain Injury Support Group

3687 E. Las Posas Road  
Suite 188, Bldg. H  
Camarillo, CA 93010  
(805) 482-1312  
[www.braininjurycenter.org](http://www.braininjurycenter.org)

### Center 4 Special Needs

1336 Moorpark Rd # 307  
Thousand Oaks, CA 91360  
(805) 338-1378  
[www.center4specialneeds.com](http://www.center4specialneeds.com)  
Gina Peters, Director

### Charter Behavioral Health System of Southern California - Thousand Oaks

150 Via Merida  
Thousand Oaks, CA 91361  
(805) 495-3292 Fax: (805) 495-9987

### Companion Connections

2175 Agate Court  
Simi Valley, CA 93065  
(805) 416-3384  
[www.companionc.com](http://www.companionc.com)  
Cynthia Conway, Owner



**Easter Seal Society California Tri-Counties**

10730 Henderson Road  
Ventura, CA 93004  
(805) 647-1141

[www.ca-t.easterseals.com](http://www.ca-t.easterseals.com)

**Make-A-Wish Foundation of the Tri-Counties**

4222 Market Street, Ste D  
Ventura, CA 93003  
(805) 676-9474

[www.tri-counties.wish.org](http://www.tri-counties.wish.org)

**Parents & Friends Group of United Cerebral Palsy**

Frank Chavez (805) 986-3254

**Pause4Kids**

P.O. Box 7113, Thousand Oaks, CA 91359

[www.pause4kids.com](http://www.pause4kids.com)

**Rainbow Connection Family Resource Center**

2401 E. Gonzales Rd., Suite 100  
Oxnard, CA 93030

Laurie Jordan, Coordinator  
Eva Gomez, Bilingual Resource Parent  
(805) 485-9643, (805) 485-9892 Spanish  
(800) 332-3679 Fax (805) 278-9056

1900 Los Angeles Ave., Suite 200  
Simi Valley, CA 93065  
(805) 522-8030 (800) 517-2524  
Fax: (805) 522-8142

[www.tri-counties.org](http://www.tri-counties.org)

**(The) Rehabilitation Institute at Santa Barbara**

427 Camino Del Remedio  
Santa Barbara, CA 93110  
Rusty Pollock, President/CEO, (805) 683-3788

**Special Education Advisory Committee for Simi Valley (SEAC)**

875 E. Cochran, Simi Valley, CA 93065

**Special Kids LA**

[www.specialkidsla.com](http://www.specialkidsla.com)

**Special Parents Café**

Toni Solano (805) 529-6174

**The K.E.N. Project in Association with United Cerebral Palsy**

23679 Calabasas Rd., #540  
Calabasas, CA 91302  
(818) 222-8118 Fax: (818) 222-2201

[specialkidslaw@gmail.com](mailto:specialkidslaw@gmail.com)  
[mgkaplan@pacbell.net](mailto:mgkaplan@pacbell.net)

[www.kenproject.com](http://www.kenproject.com)

**United Cerebral Palsy of Los Angeles, Ventura and Santa Barbara**

6430 Independence Ave.  
Woodland Hills, CA 91367  
(818) 782-2211

[www.ucpla.org](http://www.ucpla.org)

**United Parents for Families in Crisis**

391 So. Dawson, Suite 1A, Camarillo, CA 93012  
(805) 384-1555 (office)

[www.unitedparents.org](http://www.unitedparents.org)

3<sup>rd</sup> Tuesday, 6-7:30 pm  
Samaritan Center  
280 Royal Ave., Simi Valley

2<sup>nd</sup> Saturday, 10 am-12 pm  
Trinity Church  
600 Saratoga, Fillmore

2<sup>nd</sup> Monday, 6-7:30 pm  
United Parents Office  
391 S. Dawson Dr., Camarillo

1<sup>st</sup> Wednesday, 6-7:30 pm  
Tay Tunnel (Pacific Clinics)  
141 W. 5<sup>th</sup> Sts, Suite D, Oxnard

2<sup>nd</sup> Tuesday, 7-8:30 pm  
The Chabad, Suite H  
2524 Townsgate, WLV

1<sup>st</sup> & 3<sup>rd</sup> Thursday, 7-8 pm  
Aurora Vista del Mar Hospital  
801 Seneca Dr., Ventura

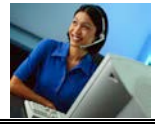
Parents with Purpose, Every Monday, 6:30-8 pm  
Pacific Clinics TAY Tunnel (separate Father's Group)  
141 W. 5<sup>th</sup> St., Suite D,

**Ventura County Autism Society**

P.O. Box 2690, Ventura, CA 93002-2690  
(805) 649-1632

**Ventura County Foster and Kinship Care**

- Moorpark College: (805) 378-1400, ext. 1891
- Oxnard College: (805) 986-5800, ext 2018 or 2009 Fax: (805) 986-5902
- Ventura College: (805) 654-6327



## Therapy (*Terapia*)

Services that offer speech, physical, occupational or educational therapy.  
(*Servicios que ofrecen terapia de habla, física, ocupacional o educacional.*)

### CA Speech and Rehabilitation, Inc.

505 Thousand Oaks Boulevard, (corner of  
Thousand Oaks, CA 91360  
(805) 495-3318  
[www.caspeech.com](http://www.caspeech.com)

### Child Development Center, Simi Valley Hospital and Health Care Services

1900 Los Angeles #300, Simi Valley, CA 93065  
Robin P. Millar, P.T., (805) 955-8120

### Children's Medical Services/CA Children's Services

2240 E. Gonzales Rd, Suite 260, Oxnard, CA 93036  
(805) 981-5281

### Children's Therapy Center, Inc.

155 Granada St., Suite A, Camarillo, CA 93010  
(805) 383-1501

### Companion Connections

2175 Agate Court  
Simi Valley, CA 93065  
(805) 416-3384  
[www.companionc.com](http://www.companionc.com)  
Cynthia Conway, Owner

### (The) Rehabilitation Institute at Santa Barbara (Medical Therapy)

427 Camino Del Remedio  
Santa Barbara, CA 93110  
Melinda Staveley, President/CEO, (805) 683-3788

### Santa Barbara Center for Educational Therapy

1021 Miramonte Dr., Santa Barbara, CA 93109  
(805) 560-3711

### Saratoga Clinic

1891 Goodyear Ave., Suite 605  
Ventura, CA 93003  
(805) 642-8490

### Seaside Therapy, Inc.

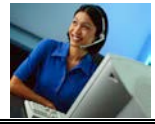
1937 Goodyear Avenue, Suite 706  
Ventura, CA 93003  
PH: 644-TALK (8255)  
FAX: 644-8256  
<http://www.seaside-therapy.com/>

### Tri-Counties Easter Seal Society

10730 Henderson Road, Ventura, CA 93004  
(805) 647-1141 Fax (805) 647-1148  
[www.ca-tr.easterseals.com](http://www.ca-tr.easterseals.com)

### Tutorific!

(805) 482-3730 - Camarillo  
(805) 982-9022 - Oxnard  
(805) 644-4076 - Ventura



## Transportation (*Transportación*)

### Amtrak

(800) 872-7245  
[www.amtrak.com](http://www.amtrak.com)

### Camarillo Area Transit

(800) 438-1112 information  
(805) 988-4228

### CAT Dial a Ride

(805) 988-4228

### Dial-a-Cab

(805) 495-3500 reservations

### Fillmore/Piru Vista Dial a Ride

(805) 524-2319

### Greyhound

ADA Request Line (800) 752-4841  
[www.greyhound.com](http://www.greyhound.com)

### Help of Ojai

Information and reservations (805) 646-0144

### Metrolink

(800) 371-5465  
[www.metrolinktrains.com](http://www.metrolinktrains.com)

### Moorpark City Bus

(805) 517-6315  
(800) 438-1112 information

### Ojai Trolley/Transit City of Ojai

(805) 640-2562  
(805) 653-2230

### Roadrunner Shuttle

Van 140, 159 and 171 (accessible vans)  
(805) 389-8196  
[www.rrshuttle.com](http://www.rrshuttle.com)

### Santa Paula - Vista Dial a Ride

Information and reservations (805) 933-2267  
(800) 438-1112

### Gold Coast Transit

Serves Ojai, Oxnard, Port Hueneme, San Buena Ventura and the unincorporated areas of Ventura County between these cities  
(805) 487-2222 TDD 711 (CA relay service)  
[www.goldcoasttransit.org](http://www.goldcoasttransit.org)

### Simi Valley Transit

Information (800) 438-1112 or (805) 583-6456  
Dial Ride: information and reservations (805) 583-6464

### Thousand Oaks

Transit information (800) 438-1112 or  
(805) 375-5473  
Subsidized Taxi information (805) 449-2400

### Transportation Services

For Ventura County and Southern California  
(800) 266-6883 1-800-Commute

### VISTA

Ventura Intercity Service Transit Authority  
Shuttle service between Ventura and Santa Barbara  
(800) 438-1112  
[www.goventura.org](http://www.goventura.org)



## II. STATE RESOURCES (*RECURSOS ESTATALES*)

TDD: Telecommunications Device for the Deaf  
(TDD: *Mecanismo de Telecomunicaciones para los Sordos*)

State Government agencies: [www.ca.gov](http://www.ca.gov)

- California Children’s Services ..... (916) 327-1400 (805) 981-5281
- Child Health & Disability Prevention (CHDP) ..... (805) 981-5291  
<http://www.vchca.org/ph/cms/chdp.htm>
- Department of Developmental Services, ..... (916) 654-1690 (916) 654-2054  
[www.dds.cahwnet.gov](http://www.dds.cahwnet.gov) (TDD)
- Department of Education [www.cde.ca.gov](http://www.cde.ca.gov) ..... (916) 319-0800
- Department of Health and Human Services ..... (916) 445-4171 (916) 657-2861 (TDD)  
<http://www.dhs.ca.gov/>
- Department of Mental Health [www.dmh.cahwnet.gov](http://www.dmh.cahwnet.gov) ..... (800) 896-4042 (800) 896-2512 (TTY)  
(916) 654-3890
- Department of Rehabilitation [www.rehab.cahwnet.gov](http://www.rehab.cahwnet.gov) ..... (916) 263-7367 (805) 648-9921
- Developmental Disabilities, State Council on ..... (916) 322-8481 (866) 802-0514 (toll-free)  
[www.s added ca.gov](http://www.s added ca.gov)
- Special Education Division <http://www.cde.ca.gov/sp/se/> (916) 327-3536

Private & non-profit associations:

- Association for Retarded Citizens of California (ARC) ..... (805) 650-8611  
[www.thearc.org](http://www.thearc.org)
- California Alliance for Legislative Fairness & Effective Autism Teaching (CALFEAT) <http://www.feat.org/> (916) 491-1033
- CalTASH (Association for Persons with Severe Handicaps) (310) 258-4024  
<http://www.tash.org/chapters/caltash/index.htm>
- Exceptional Parents Unlimited [www.iser.com/EPU.html](http://www.iser.com/EPU.html) ..... (559) 229-2956 559-225-6059 (TTY)
- Learning Disabilities Association of California [www.ldaca.org](http://www.ldaca.org) ..... (916) 725-7881 (866) 532-6322 (toll-free)
- MATRIX, A Parents Network & Information Center ..... (415) 884-3535 (800) 578-2592  
[www.matrixparents.org](http://www.matrixparents.org)
- Parents Helping Parents (RISE-Resources in Special Education) ..... (408) 727-5775  
[www.php.com](http://www.php.com)
- Prader-Willi California <http://www.pwcf.org/> ..... (805) 389-3484 (800) 400-9994
- Protection and Advocacy, Inc. [www.pai-ca.org](http://www.pai-ca.org) ..... (916) 488-9955 (800) 776-5746
- TASK (Team of Advocates for Special Kids) [www.taskca.org](http://www.taskca.org) ..... (714) 533-8275
- The Special Edge <http://www.calstat.org/specialEdge.html> ..... (707) 206-0533
- Tourette Spectrum Disorder Association .....  
<http://www.tourettes-disorder.com/>
- United Cerebral Palsy of California (UCPA) [www.ucpa.org](http://www.ucpa.org) ..... (818) 782-2211



### III. NATIONAL RESOURCES (*RECURSOS NACIONALES*)

Federal government:

- ADA Info Line, Department of Justice .....(800) 514-0301 (800) 514-0383 (TDD)  
[www.ada.gov/infoline.htm](http://www.ada.gov/infoline.htm)
- Administration on Development Disabilities (DHHS) .....(202) 690-6590  
[www.acf.dhhs.gov/programs/add/](http://www.acf.dhhs.gov/programs/add/)
- Center for Mental Health Services .....(800) 789-2647  
[www.mentalhealth.org](http://www.mentalhealth.org)
- Department of Education [www.ed.gov](http://www.ed.gov) .....(202) 401-2000 (800) 872-5327
- Education Resource Organizations Directory (EROD)  
<http://wdcrobcolp01.ed.gov/Programs/EROD/>
- Educational Resources Information Center (ERIC).....(800) 538-3742  
[www.accesseric.org](http://www.accesseric.org)
- National Council on Disability .....(202) 272-2004 (202) 272-2074 (TTY)  
[www.ncd.gov](http://www.ncd.gov)
- National Information Center on Developmental Disabilities.....(800) 922-9234  
[www.acf.dhhs.gov](http://www.acf.dhhs.gov)
- National Institute of Child Health and Human Development .....(301) 496-5133  
[www.nichd.nih.gov](http://www.nichd.nih.gov)
- National Institute of Mental Health [www.nimh.nih.gov](http://www.nimh.nih.gov).....(301) 443-4513 (866) 415-8051
- National Institute of Neurological Disorders [www.ninds.nih.gov](http://www.ninds.nih.gov) .....(301) 496-5751 (800) 352-9424
- National Institute on Deafness and Other Communication Disorders (800) 241-1044  
[www.nidcd.nih.gov](http://www.nidcd.nih.gov)
- National Institute on Disability and Rehabilitation Research.....(202) 205-8134 (202) 205-9433 (TTY)  
[www.ncddr.org](http://www.ncddr.org)
- National Library of Education [www.ed.gov/NLE](http://www.ed.gov/NLE) .....(202) 205-7561 (800) 424-1616
- National Library Service for the Blind and Physically Handicapped ... (202) 707-9275 (800) 424-8567  
[www.loc.gov/nls](http://www.loc.gov/nls) (V/TTY)
- National School-to-Work Initiative .....(202) 401-6222 (800) 251-7236
- Office of Education Research & Improvement (OERI).....  
[www.ed.gov/offices/OERI](http://www.ed.gov/offices/OERI)
- Office of Special Education & Rehabilitative Services (OSERS) .....(202) 245-7468 (800) 872-2357  
<http://www2.ed.gov/about/offices/list/osers/index.html> (202) 205-5465 (V/TTY)
- President’s Committee on Employment of People with Disabilities ..(202) 376-6200 (202) 376-6205 (TTY)  
[www.pcepd.gov](http://www.pcepd.gov)
- Presidential Task Force on Employment of Adults with Disabilities... (202) 693-4939 (202) 693-4920 (TTY)  
[www.disAbility.gov](http://www.disAbility.gov)
- Senate Subcommittee on Disability Policy .....(202) 224-6265
- Supplemental Security Income (SSI) [www.ssa.gov](http://www.ssa.gov).....(805) 379-3427 (800) 772-1213

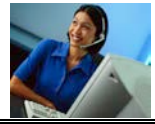


**Private & non-profit associations:**

- ABLEDATA (Adaptive Equipment) [www.abledata.com](http://www.abledata.com) .....(800) 227-0216
- Academy of Educational Development [www.aed.org](http://www.aed.org) .....(202) 884-8000
- Aid to Adoption of Special Kids (AASK) [www.adoptaspecialkid.org](http://www.adoptaspecialkid.org) ..(510) 553-1748 (888) 680-7349
- Alexander Graham Bell Association for the Deaf and Hard of .....(202) 337-5220 (V/TDD)
- Hearing [www.agbell.org](http://www.agbell.org)
- All Kinds of Minds [www.allkindsofminds.org](http://www.allkindsofminds.org).....
- Alliance for Technology Access [www.ataccess.org](http://www.ataccess.org) .....(415) 455-4575
- Alliance of Genetic Support Groups [www.geneticalliance.org](http://www.geneticalliance.org) .....(202) 966-5557 (800) 336-4363
- American Academy of Child and Adolescent Psychiatry .....(202) 966-7300  
[www.aacap.org](http://www.aacap.org)
- American Association of the Deaf-Blind .....(301) 588-6545 (TTY) (800) 735-2258  
<http://www.aadb.org/>
- American Association on Intellectual and Developmental Disabilities [www.aamr.org](http://www.aamr.org)..... (800) 424-3688
- American Cleft Palate Foundations [www.cleftline.org](http://www.cleftline.org) .....(919) 933-9044 (800) 24CLEFT
- American Council of the Blind [www.acb.org](http://www.acb.org) .....(202) 467-5081 (800) 424-8666
- American Deafness and Rehabilitation Association [www.adara.org](http://www.adara.org)
- American Diabetes Association [www.diabetes.org](http://www.diabetes.org) ..... (800) DIABETES
- American Epilepsy Society [www.aesnet.org](http://www.aesnet.org) .....(860) 586-7505
- American Foundation for the Blind [www.afb.org](http://www.afb.org) .....(212) 502-7600 (800) 232-5463
- American Hyperlexia Association [www.hyperlexia.org](http://www.hyperlexia.org) .....(630) 530-8551
- American Paralysis Association [www.apacure.com](http://www.apacure.com).....
- American Printing House for the Blind [www.aph.org](http://www.aph.org) .....(502) 895-2405 (800) 223-1839
- American Self-Help Clearinghouse .....(973) 625-9053  
[www.mentalhelp.net/selfhelp](http://www.mentalhelp.net/selfhelp)
- American Society for Deaf Children (ASDC) [www.deafchildren.org](http://www.deafchildren.org) ..(717) 703-0073 (800) 942-2732
- American Speech-Language Hearing Association [www.asha.org](http://www.asha.org) .....(301) 296-5650 (800) 638-8255
- Angelman Syndrome Foundation [www.angelman.org](http://www.angelman.org).....(630) 978-4245 (800) 432-6435
- Asperger Syndrome Coalition of the US (OASIS-MAAP)  
[www.asperger.org](http://www.asperger.org)
- Asperger Syndrome Education Network (ASPEN) [www.aspennj.org](http://www.aspennj.org) (732) 321-0880
- Association for Persons with Severe Handicaps [www.tash.org](http://www.tash.org).....(202) 540-9020
- Association for Retarded Citizens of the United States .....(202) 534-3700 (800) 433-5255 (TDD)  
[www.thearc.org](http://www.thearc.org)
- Association of Birth Defect Children [www.birthdefects.org](http://www.birthdefects.org) .....(407) 895-0802
- Association on Higher Education and Disability [www.ahead.org](http://www.ahead.org) .....(704) 947-7779
- Autism PDD Resources Network [www.autism-pdd.net](http://www.autism-pdd.net)
- Autism Resources [www.autism-info.com](http://www.autism-info.com)
- Autism Society of America [www.autism-society.org](http://www.autism-society.org) .....(301) 657-0881 (800) 328-8476
- Bazelon Center for Mental Health Law .....(202) 467-5730  
[www.bazelon.org](http://www.bazelon.org)
- Better Hearing Institute Helpline [www.betterhearing.org](http://www.betterhearing.org) .....(202) 449-1100 (800) 327-9355



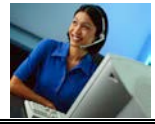
- Braille Institute of America [www.brailleinstitute.org](http://www.brailleinstitute.org) ..... (800) 272-4553
- Center for Applied Science Technology [www.cast.org](http://www.cast.org) ..... (781) 245-2212
- Center for the Assessment and Remediation of Reading Difficulties (CARRD) [CARRD@pittstate.edu](mailto:CARRD@pittstate.edu) 866-588-READ(7323)
- Center for Special Education Technology Information Exchange ..... (800) 345-8324
- Center for the Study of Autism [www.autism.org](http://www.autism.org)
- Children with Attention Deficit Disorders [www.chadd.org](http://www.chadd.org) ..... (301) 306-7070 (800) 233-4050
- Children’s PKU Network [www.pkunetwork.org](http://www.pkunetwork.org) ..... (800) 377-6677
- Children’s Tumor Foundation (213) 216-7789 (800) 323-7938
- Cleft Palate Foundation [www.cleftline.org](http://www.cleftline.org) ..... (919) 933-9044 (800) 242-2338
- Cornelia De Lange Syndrome Foundation [www.cdlsusa.org](http://www.cdlsusa.org)..... (800) 753-2357 (800) 223-8355
- Council for Exceptional Children [www.cec.sped.org](http://www.cec.sped.org) ..... (866) 915-5000 TTY (888) 232-7733
- Cri Du Chat Syndrome (5p-) <http://www.criduchat.org.uk/>
- Cystic Fibrosis Foundation [www.cff.org](http://www.cff.org) ..... (301) 951-4422 (800) 344-4823
- Disabilities Studies and Services Center [www.dssc.org](http://www.dssc.org) ..... (202) 884-8215
- Disability Rights Advocates [www.dralegal.org](http://www.dralegal.org) ..... (510) 665-8644 (510) 665-8716 (TTY)
- Disability Rights California (DRC) [www.disabilityrightsca.org](http://www.disabilityrightsca.org)..... (800) 776-5746 (800) 719-5798 (TTY)
- Disability Rights Education & Defense Fund ..... (510) 644-2555 (V/TTY) (800) 466-4232  
[www.dredf.org](http://www.dredf.org)
- Dyslexia Research Institute [www.dyslexia-add.org](http://www.dyslexia-add.org)..... (850) 893-2216
- EDLAW (YAP) [www.youthadvocacyproject.org](http://www.youthadvocacyproject.org) (617) 989-8100
- Education Development Center [www.edc.org](http://www.edc.org) ..... (617) 969-7100 (617) 964-5448 (TTY)
- Epilepsy Foundation of America [www.efa.org](http://www.efa.org) ..... (800) 332-1000
- Epilepsy Information Service at Wake Forrest University Baptist..... (800) 642-0500 Medical Center
- Exceptional Parent Magazine [www.eparent.com](http://www.eparent.com).....
- Families and Advocates Partnership for Education [www.fape.org](http://www.fape.org) .... (952) 838-9000 (952) 838-0190 (TTY)
- Families for Early Autism Treatment [www.feat.org](http://www.feat.org) ..... (916) 303-7405
- Federal Resource Center for Special Education [www.cecpr.air.org](http://www.cecpr.air.org) ... (202) 884-8215 (800) 695-0285 (TTY)
- Federation of Families for Children’s Mental Health (240) 403-1901  
[www.ffcmh.org](http://www.ffcmh.org) .....
- Foundation Fighting Blindness [www.blindness.org](http://www.blindness.org) ..... (410) 568-0150 (800) 683-5555 (800) 683-5551 (TDD)
- Guardians of Hydrocephalus Research Foundation ..... (718) 743-4473 (310) 691-1411
- Hear Now Starkey Hearing Foundation ..... (800) 328-8602
- Hearing Aid Helpline ..... (800) 521-5247
- Hearing Loss Association of America [www.hearingloss.org](http://www.hearingloss.org) ..... (301) 657-2248
- HEATH (Higher Education And The Handicapped) Resource Center (202) 973-0904 (800) 544-3284  
[www.heath.gwu.edu](http://www.heath.gwu.edu)..... (V/TTY)
- Helen Keller National Center for Deaf-Blind Youth and Adults (516) 944-8900  
[www.hknc.org](http://www.hknc.org)
- House Ear Institute [www.hei.org](http://www.hei.org) ..... (213) 484-2642 (TDD) (800) 388-8612
- Human Growth Foundation [www.hgfound.org](http://www.hgfound.org) ..... (516) 671-4055 (800) 451-4634
- Hydrocephalus Association [www.hydroassoc.org](http://www.hydroassoc.org) ..... (415) 732-7040 (888) 598-3789



- Hydrocephalus Support Group e-mail: [hydrodb@earthlink.net](mailto:hydrodb@earthlink.net) .....(636) 532-8228
- IDEA Practices the Council for Exceptional Children (703) 264-9480 (TDD) (877) 232-4332  
[www.ideapractices.org](http://www.ideapractices.org).....
- International Dyslexia Association [www.interdys.org](http://www.interdys.org).....(410) 296-0232
- International OCD Foundation [www.ocfoundation.org](http://www.ocfoundation.org) .....(617) 973-5801
- International Rett Syndrome Association [www.rettssyndrome.org](http://www.rettssyndrome.org).... (800) 818-7388
- Internet Mental Health [www.mentalhealth.com](http://www.mentalhealth.com)
- Internet Special Education Resources (ISER) [www.iser.com](http://www.iser.com) (301) 649-6207
- Internet Special Education Resources on the Internet  
[www.seriweb.com](http://www.seriweb.com)
- Job Accommodation Network <http://janweb.icdi.wvu.edu/> .....(800) 526-7234 (877) 781-9403 (TTY)
- John Tracy Clinic for Preschool Deaf Children .....(213) 748-5481 (562) 426-2257  
[www.johntracyclinic.org](http://www.johntracyclinic.org) Los Angeles Long Beach
- Keshet - Jewish Parents of Children with Special Needs .....(847) 205-0274  
[www.keshet.org](http://www.keshet.org)
- Laurent Clerc National Deaf Education.....(202) 651-5636 (V/TTY)  
<http://clerccenter.gallaudet.edu> CTR
- Learning Disabilities Online [www.ldonline.org](http://www.ldonline.org)
- Learning Disability Association of America [www.ldanatl.org](http://www.ldanatl.org).....(412) 341-1515
- Learning Disability Resources [www.ldresources.com](http://www.ldresources.com)
- Lift Disability Network <http://www.liftdisabilitynetwork.org/> .....(407) 228-8343
- Lowe’s Syndrome [www.lowesyndrome.org](http://www.lowesyndrome.org) .....(972) 733-1338
- March of Dimes Birth Defects Foundation [www.marchofdimes.com](http://www.marchofdimes.com) .(415) 788-2202 (914) 997-4488
- Midwest Center on the Law and the Deaf [www.mclld.org](http://www.mclld.org) .....(800) 894-3653 (800) 894-3654 (TTY)
- Muscular Dystrophy Association [www.mdauusa.org](http://www.mdauusa.org) ..... (800) 572-1717
- National Alliance for Secondary Education and Transition.....(612) 624-1143  
[www.nasetalliance.org](http://www.nasetalliance.org)
- National Alliance for the Mentally Ill [www.nami.org](http://www.nami.org) .....(703) 524-7600 (800) 950-6264
- National Alliance of Blind Students [www.acbstudents.org](http://www.acbstudents.org) .....(800) 424-8666
- National Association for Down Syndrome [www.nads.org](http://www.nads.org) (630) 325-9112
- National Association for Parents of the Visually Impaired .....(617) 972-7441 (800) 562-6265  
[www.spedex.com/napvi](http://www.spedex.com/napvi)
- National Association for the Education of Young Children.....(202) 232-8777 (800) 424-2460  
[www.naeyc.org](http://www.naeyc.org)
- National Association for Visually Handicapped [www.navh.org](http://www.navh.org) .....(212) 889-3141 (415) 221-3201
- National Association of Developmental Disabilities Councils .....(703) 739-4400  
[www.nacdd.org](http://www.nacdd.org)
- National Association of Private Special Education Centers (202) 408-3338  
[www.napsec.com](http://www.napsec.com)
- National Association of School Psychologists [www.naspweb.org](http://www.naspweb.org) .....(301) 657-0270
- National Association of the Deaf Hearing Loss [www.nad.org](http://www.nad.org) .....(301) 587-1788 (301) 587-1789 (TTY)
- National Ataxia Foundation [www.ataxia.org](http://www.ataxia.org) .....(763) 553-0020
- National Attention Deficit Disorder Association [www.add.org](http://www.add.org)..... (800) 939-1019



- National Birth Defects Center [www.thegenesisfund.org/nbdc.htm](http://www.thegenesisfund.org/nbdc.htm) ... (781) 890-4282
- National Braille Press [www.braille.com](http://www.braille.com) ..... (617) 266-6160 (888) 965-8965
- National Brain Injury Information Center [www.biausa.org](http://www.biausa.org) ..... (800) 444-6443
- National Brain Injury Information Center [www.biausa.org](http://www.biausa.org) ..... (800) 444-6443
- National Catholic Partnership on Disability [www.ncpd.org](http://www.ncpd.org) ..... (202) 529-2933 (202) 529-2934 (TTY)
- National Center for Learning Disabilities [www.ld.org](http://www.ld.org) ..... (212) 545-7510 (888) 575-7373
- National Center for Stuttering Hotline [www.stuttering.com](http://www.stuttering.com) ..... (800) 221-2483
- National Center for the Blind [www.blind.net/onw30000.htm](http://www.blind.net/onw30000.htm) ..... (800) 638-7518
- National Dissemination Center for Children with Disabilities ..... (202) 884-8200 (V/TTY) (800) 695-0285 (NICHCY) [www.nichcy.org](http://www.nichcy.org) (V/TTY)
- National Dissemination Center for Children with Disabilities (NICHCY) [www.nichy.org](http://www.nichy.org) ..... (800) 695-0285 (V/TTY)
- National Down Syndrome Congress [www.ndscenter.org](http://www.ndscenter.org) ..... (770) 604-9500 (800) 232-6372
- National Down Syndrome Society [www.ndss.org](http://www.ndss.org) ..... (800) 221-4602
- National Down Syndrome Society [www.ndss.org](http://www.ndss.org) ..... (800) 221-4602
- National Easter Seal Society [www.easter-seals.org](http://www.easter-seals.org) ..... (312) 726-4258 (TTY) (800) 221-6827
- National Family Center for Deaf-Blind [www.nfadb.org](http://www.nfadb.org) ..... (800) 255-0411
- National Federation for the Blind [www.nfb.org](http://www.nfb.org) ..... (410) 659-9314
- National Fragile X Syndrome Foundation [www.nfxf.org](http://www.nfxf.org) ..... (800) 688-8765
- National Hemophilia Foundation [www.hemophilia.org](http://www.hemophilia.org) ..... (212) 328-3700 (800) 424-2634
- National Hydrocephalus Foundation [www.nhfonline.org](http://www.nhfonline.org) ..... (562) 924-6666 (888) 857-3434
- National Marfan Foundation [www.marfan.org](http://www.marfan.org) ..... (516) 883-8712 (800) 862-7326
- National Organization for Rare Disorders, Inc. (NORD) ..... (203) 744-0100 (800) 999-6673 [www.rarediseases.org](http://www.rarediseases.org)
- National Organization on Disability [www.nod.org](http://www.nod.org) ..... (202) 293-5960
- National Organization on Fetal Alcohol Syndrome [www.nofas.org](http://www.nofas.org) .... (202) 785-4585 (800) 666-6327
- National Parent Information Network <http://npin.org>
- National Parent Network on Disabilities [www.php.com](http://www.php.com) ..... (202) 463-2299
- National Parent to Parent Support and Information System ..... (706) 632-8822 (V/TTY) (800) 651-1151 (V/TTY)
- National Rehabilitation Information Center [www.naric.com](http://www.naric.com) ..... (310) 459-5900 (800) 346-2742 (310) 459-5984 (TTY)
- National Technical Institute for the Deaf (RIT) [www.ntid.rit.edu](http://www.ntid.rit.edu) .... (585) 475-6400 (V/TTY)
- National Tuberous Sclerosis Association [www.tsalliance.org](http://www.tsalliance.org) ..... (301) 582-9870 (800) 981-2663
- Online Asperger Syndrome Information and Support (OASIS) [www.aspergersyndrome.org](http://www.aspergersyndrome.org)
- Osteogenesis Imperfecta [www.oif.org](http://www.oif.org) ..... (301) 947-0083 (800) 981-2663
- Parent Advocacy Coalition for Educational Rights (PACER) ..... (888) 248-0822 (952) 838-9000 [www.pacer.org](http://www.pacer.org)
- Parents of Gifted/LD students [www.ldonline.org/indepth/gifted](http://www.ldonline.org/indepth/gifted) ... Fax: 703-998-2060
- Peterson’s Directory to Private Schools [www.petersons.com](http://www.petersons.com) (888)438-2633
- Portland (ORE) Research and Training Center on Family Support and Children’s Mental Health [www.rtc.pdx.edu](http://www.rtc.pdx.edu) (503) 725-4040



- Prader-Willi Syndrome Association [www.pwsausa.org](http://www.pwsausa.org) (800) 926-4797
- Recording for the Blind & Dyslexic [www.rfbd.org](http://www.rfbd.org) ..... (800) 221-4792
- Research & Training Center on Family Support & Children’s Mental Health [www.rtc.pdx.edu](http://www.rtc.pdx.edu) ..... (503) 725-4040 (TTY)
- Resource for Children with Special Needs, Inc. ....(212) 677-4650  
[www.resourcesnyc.org](http://www.resourcesnyc.org)
- Self-Help Group Sourcebook online .....  
[www.mentalhelp.net/selfhelp](http://www.mentalhelp.net/selfhelp)
- Special Education Resources on the Internet (SERI)  
[www.seriweb.com](http://www.seriweb.com)
- Special Needs Advocate for Parents (SNAP) .....(888) 310-9889
- Spina Bifida Association [www.sbaa.org](http://www.sbaa.org) .....(202) 944-3285 (800) 621-3141
- Stuttering Foundation of America [www.stuttersfa.org](http://www.stuttersfa.org) .....(901) 452-7343 (800) 992-9392
- Technical Assistance Alliance for Parents Programs .....(888) 248-0822  
[www.taalliance.org](http://www.taalliance.org)
- The Children’s Tumor Foundation [www.nf.org](http://www.nf.org) .....(213) 216-7789 (800) 323-7938
- The Magic Foundation – growth disorders 1-800-3-Magic-3  
<http://www.magicfoundation.org/www>
- Tourette Syndrome Association [www.tsa-usa.org](http://www.tsa-usa.org) .....(718) 224-2999
- Treatment and Education of Autistic and Related Communication Handicapped Children [www.teacch.com](http://www.teacch.com) .....
- United Cerebral Palsy Association, Inc. [www.ucp.org](http://www.ucp.org) .....(202) 776-0406 (800) 872-5827
- United States Access Board [www.access-board.gov](http://www.access-board.gov) .....(202) 272-0080 TTY (800) 872-2253  
(800) 993-2822
- Williams Syndrome Association [www.williams-syndrome.org](http://www.williams-syndrome.org) .....(800) 806-1871
- Williams Syndrome Foundation [www.wsf.org](http://www.wsf.org) .....(949) 824-7259
- Wrightslaw [www.wrightslaw.com](http://www.wrightslaw.com) .....
- Yoga for the Special Child [www.specialyoga.com](http://www.specialyoga.com) .....(941) 925-9677 (888) 900-YOGA

**IV. OTHER RECOMMENDED RESOURCES (OTRO RECURSOS RECOMENDADOS)**

**Libraries (*Bibliotecas*)**

Rainbow Connection Family Resource Center  
Library  
2401 E. Gonzales Rd., Suite 100  
Oxnard, CA 93030 (805) 332-3679

United Parents for Families in Crisis  
391 S. Dawson Dr., Suite 1A  
Camarillo, CA 93012  
(805) 384-1555



## Reference Books (*Libros De Referencia*)

Published locally by the Ventura County SELPA. Go to our website at [www.venturacountyselpa.com](http://www.venturacountyselpa.com) or call (805) 437-1560 for assistance. FREE to parents.

*Publicados localmente por SELPA del Condado de Ventura. Vea nuestro sitio en el internet [www.venturacountyselpa.com](http://www.venturacountyselpa.com) o llame al (805) 437-1560 para asistencia. GRATUITOS para padres.*

### Available in English

90 Ways to Help Students with ADHD - Brochure

A Parent Guide to Special Education - Booklet

A Parent Guide to Transition Planning - Brochure

A Parent's Guide to Achievement Testing (English or Spanish) - Brochure

A+ Access, Accommodations, and Acceptance "A Winning Grade" - Brochure

AB3632 - How does it help with Mental Health Services? - Brochure

Are You Concerned About Your Child? (3-22 years old, English/Spanish) - Brochure

Autism...a Confusing Diagnosis! - Brochure

Community Park and Recreation Programs - Booklet

Community Resource Directories of Services for People with Special Needs (all English/Spanish) Booklet - by age group: ♦Young Children (0-5) ♦School Age ♦Transition to Adult

Could Your Baby Benefit From Early Education Services? (Birth-3, English/Spanish) - Brochure

Do You Have a Special Education Dispute You'd Like to Solve? - Brochure

Family Fact Sheet - Sorting through services to help you help your child...Regional Center or Schools? Brochure

Going to College...or Thinking About it? - Booklet

Parent Guide to Transition Planning

Parent/Adult Student Rights - Complete or Abbreviated

Sensory Issues and Needs of Children in Early Start - Brochure

What Exactly is a SELPA and What Does it Do? - Brochure

What is Apraxia of Speech? A Guide for Parents of 3-5 year olds - Brochure

What's Next After Early Start? - Booklet

### Disponibles en español

*¿Puede Su Niño Beneficiar De Servicios De Intervención Temprana? (de nacimiento hasta los 3 años) - Folleto*

*¿Que es SELPA Exactamente y Que es lo Que Desempeña? - Folleto*

*¿Que Sigue Después del Comienzo Temprano? - Libro*

*AB3632 (Servicios - Salud de Comportamiento del Condado de Ventura) - Folleto*

*Autismo...un diagnostico confuso - Folleto*

*Derechos Paternales Sobre Educación Especial - Completo o Abrevado*

*Directorio de Recursos Comunitarios de Servicios para Personas con Necesidades Especiales Folleto - por edad:*

*♦ Niños Chicos (0-5) ♦ Edad Escolar ♦ Transición a Adulto*

*Están Preocupados por su niño/niña? (de 3 - 22 años) - Folleto*



*Guía Para Los Padres Para Comprobar el Nivel Académico - Folleto*

*Hoja Informativa Familiar - Clasificando servicios completamente para ayudarle a ayudar a su hijo/a...¿Centro Regional o escuelas? - Folleto*

*Servicio de Referencia de Procedimientos de Protección del Departamento de Educación de California - Folleto*

*Un Guía Para Padres Sobre Educación Especial - Libro*

*Un Guía Para Padres Sobre Exámenes de Acontecimiento - Folleto*

*Un Guía Para Padres Sobre la Planificación de la Transición - Folleto*

## **Internet Resources (*Recursos De Internet*)**

Center on Human Policy - disability resource  
(Syracuse University)  
(315) 443-3851 or (800) 894-0826  
<http://thechp.syr.edu/>

Education Resource Organizations Directory (EROD)  
<http://wdcrocolp01.ed.gov/Programs/EROD/>

Interface Resource Guide online ("The Blue Book" - local resources)  
(800) 636-6738  
[www.icfs.org](http://www.icfs.org)

Internet Special Education Resources (ISER)  
[www.iser.com](http://www.iser.com)

Learning Disability Resources  
[www.ldresources.org](http://www.ldresources.org)

National Disability Organizations and Agencies  
[www.pacer.org](http://www.pacer.org)

National Organizations (Learning Disabilities)  
[www.pittstate.edu/services/carrd/national.htm](http://www.pittstate.edu/services/carrd/national.htm)

## **Resource Directories (*Directorios De Recursos*)**

A Parent Guide to Special Education  
Ventura County SELPA  
Free to families of special education students  
(805) 437-1560  
[llozano@vcoe.org](mailto:llozano@vcoe.org)

Exceptional Parent Resource Guide  
(877) 372-7368  
[www.eparent.com](http://www.eparent.com)

Interface Resource Guide  
("The Blue Book" - local)  
2-1-1 (Ventura County Blue Book)  
(800) 636-6738  
[www.icfs.org](http://www.icfs.org)



## **V. ACKNOWLEDGEMENTS (RECONOCIMIENTOS)**

This booklet was updated and revised by the Parent Information Subcommittee of the 2003-2004 Community Advisory Committee. (*Este folleto fue revisado y puesto al día por el subcomité de Información para Padres del Comité Concejal para la Comunidad 2000-2001.*)

Other contributors (*Otros contribuyentes*):

Fran Arner-Costello

Reta Mehta

Alisa Maher

And SPECIAL THANKS to Laura Lozano for her tireless hours of clerical support. (*Y un AGRADECIMIENTO ESPECIAL a Laura Lozano por sus incansables horas de apoyo.*)

## **VI. STILL CAN'T FIND IT? (¿NO LO ENCUENTRA?)**

If you have any problems finding a needed resource call Help-Line...Remember resources change frequently. (*Si tiene problemas en encontrar recursos llame a la Línea de Ayuda...Recuerde que los recursos cambian frecuentemente.*)

### **Help-Line (Línea De Ayuda)**

Information and Referral Services of Ventura County  
(*Información y Servicios de Referencias del Condado de Ventura*)

496-1994 529-0975 647-7855

496-4866 TDD-Telecommunications Device for the Deaf  
(*Telecomunicación para los sordos*)

1-800-556-6607 (Ojai, Fillmore, and Piru residents)

*SE HABLA ESPAÑOL - "Help-Line" tiene especialistas de línea informativa y referencia bilingüe disponibles de lunes a viernes.*