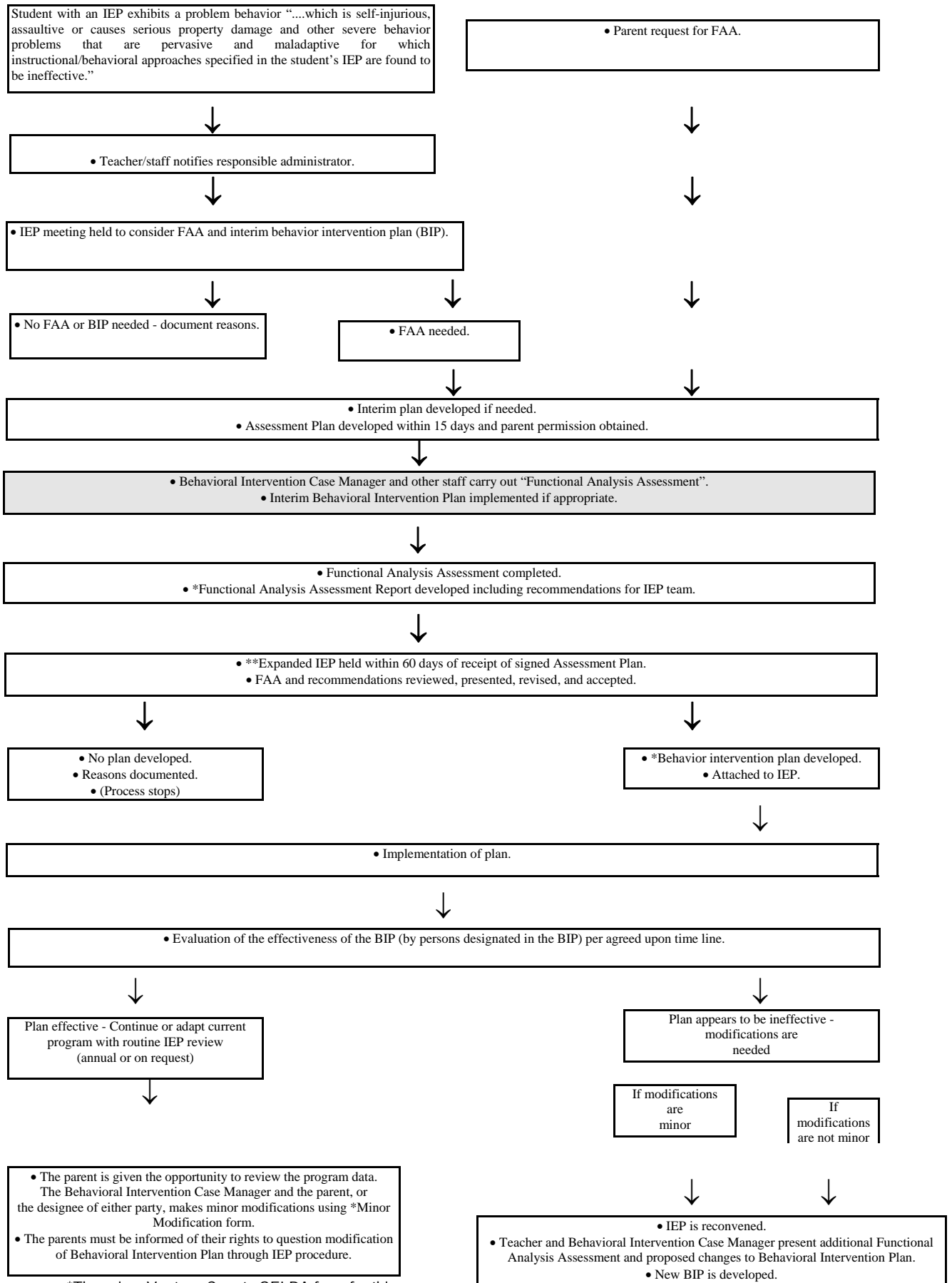


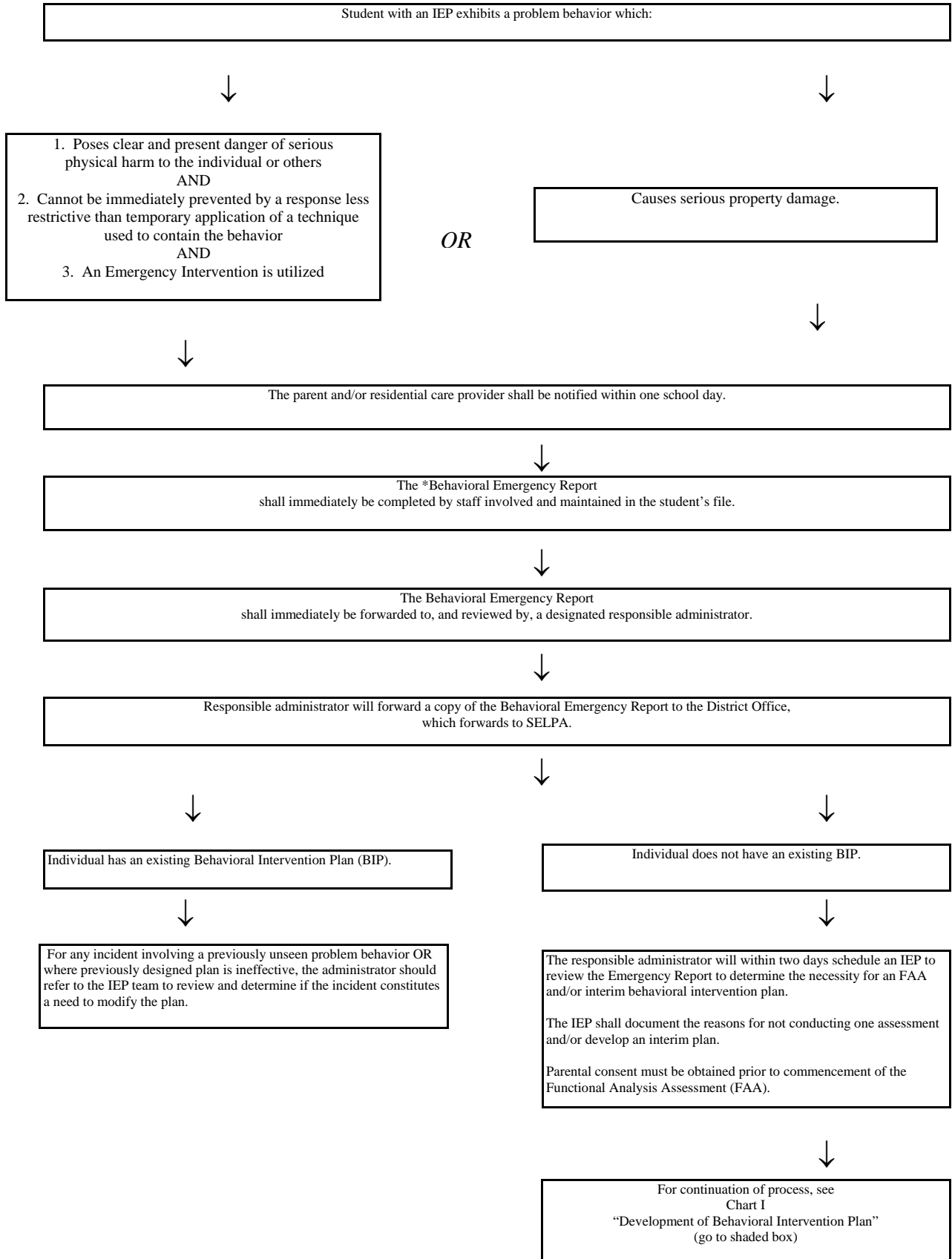
**CHART I  
Development of Behavioral Intervention Plan - INITIAL**



- \*There is a Ventura County SELPA form for this process.
- \*\* Expanded IEP includes Behavioral Intervention Case manager with documented training in behavior analysis including positive behavioral intervention(s), qualified personnel knowledgeable of the student's health needs, and others as described in Ed. Code Section 56341 (c)(2).

CHART II

If A Behavior Emergency Has Occurred



**Ventura County SELPA  
Guidelines for Providing and Documenting School-Based Services  
Before Referral to Mental Health 26.5**

