



## Families and Professionals Working Together . . .

Some services may actually address needs in both home and school, which is not a bad thing! You should work closely with professionals from both agencies to assure that skills worked on in one setting generalize to other areas. However, sometimes duplication of services may be confusing to your child and actually detract from progress.

You and your team should work hand in hand to make sure that programming is consistent and well coordinated with your child's best interests in mind.

**Remember . . . consistent support and follow-up by parents is the one factor which has the highest likelihood of increasing your child's success!**



*With a combination of "regular family activities" and special disabilities services, you and your child can create rich and memorable life experiences.*



## Typical Community Programs . . .

There are probably many important family activities in which you want all your children to participate. These may include sports, religious activities, after school clubs, etc. Families are encouraged to enroll their children with disabilities and support their participation as all parents do!

**Most importantly . . . enjoy your child and have fun !!** 

There are Family Resource Centers that you can contact for support and assistance:

- ◆ Rainbow Connection Family Resource Center, Ventura County- (805) 489-9643, (800) 664-3177
- ◆ Family First- [www.alphasb.org](http://www.alphasb.org)  
Santa Barbara  
(805) 683-2145, (877) 414-6227  
Santa Maria  
(805) 347-2775
- ◆ Parents Helping Parents, San Luis Obispo-  
San Luis Obispo  
(805) 543-3277  
Atascadero  
(805) 461-7415

The SELPAs of San Luis Obispo, Santa Barbara, and Ventura Counties and the Tri-Counties Regional Center

**Present . . .**

# FAMILY FACT SHEET

*Sorting through services to help you help your child. . . Regional Center or Schools?*

*more information for families:*  
[www.venturacountyselfpa.com](http://www.venturacountyselfpa.com)





## Navigating the disabilities world . . .



Your child has a disability that may make him/her eligible for services from BOTH regional center and special education. For most families, this is unexpected and uncharted territory. Sorting through who does what, and when, can be confusing!

Typically, families expect their children will go to school, have extra-curricular activities, summer camp and other childhood experiences. When the child has a disability, this can become more complicated. It may not be clear to parents how their children can participate.



## Determining your child's needs . . .

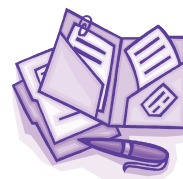
Many professionals will work with you, looking at assessment reports, listening to your input and evaluating other sources of information to determine your child's specific needs related to the disability. You will participate as an integral team member in many planning meetings (*probably more than you ever wanted to*) which may have names like IFSP, IPP, and IEP.

You are encouraged to bring any other people to the meeting who can support you.

These meetings will help the team determine **your** child's needs and goals. Services that are provided are those that are necessary to help your child achieve these goals. No two children will need the exact same services, regardless of similarity of disability and diagnosis.

**Don't let the ALPHABET SOUP confuse you. (Ask-ask-ask!)**

## Special Education Services . . .



Special education services are specified in your child's Individualized Education Program (IEP). These services support your child's growth and development **in school**. The IEP team looks at your child's functioning in the school environment, and together you set realistic goals.

Services will be provided as necessary to help your child reach those goals. In a school setting, most services are multidisciplinary,

which means many people, including the teacher, work with your child to attain and maintain the goals. The IEP team considers the expertise of staff in your child's program as well as additional staff needs in deciding who does what. (*For example, a child with a speech/language goal who is in a language-rich classroom environment will have multiple natural opportunities to work on the speech/language goals and may not need additional individual speech therapy.*)

## Regional Center Services . . .



Services provided by the Regional Center are specified in your child's Individual Program Plan (IPP), which is developed by a person-centered planning process. These services help you help your child to be a full participant in daily life.

Based on the strengths, needs and preferences of your child and/or family, services and supports may be provided by generic or public resources, unpaid community supports, or vendors under contract with the Regional Center.